



Logger XS mini

mini T *mini T1* *mini TH* *mini 1way*

Ideal for temperature and humidity transport recording and for measurements in cold rooms. Integrated USB for data download



USB



Measurement range
from 40°C...+80°C



Compliant
EN 12830



Automatic
PDF report



Pharmaceutical



Food and agriculture



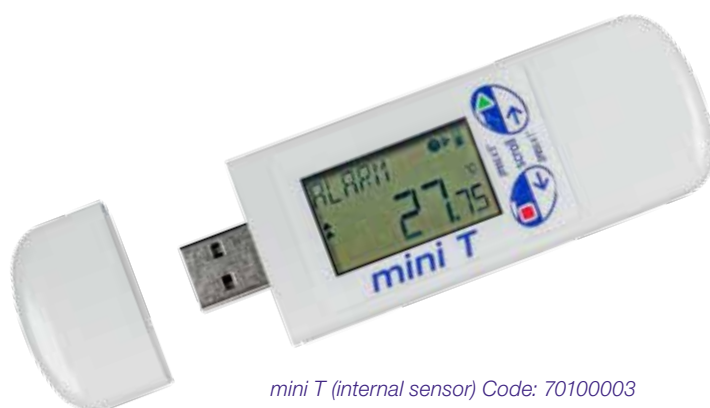
Hospital and research

mini T - mini T1

Temperature

The XS mini T datalogger, programmable with the zLogg Manager software, automatically generates a report in PDF format.

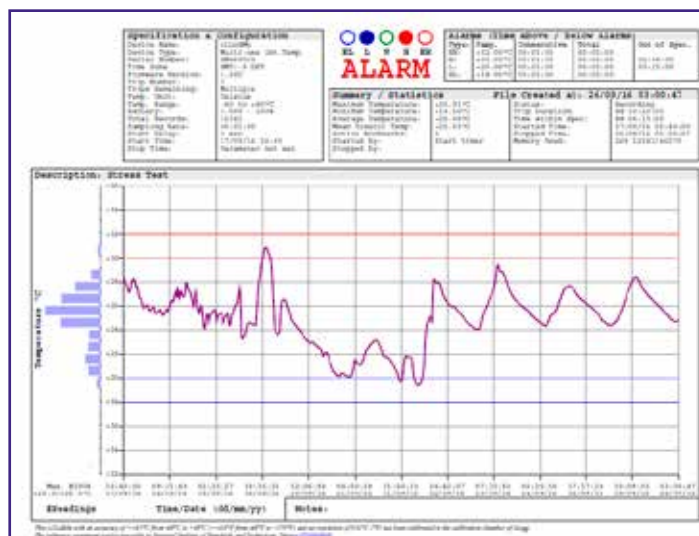
- The programming software zLogg Manager is free to download on www.xsinstruments.com
- Proprietary software and interfaces not required for data reading
- Customizable Report PDF with graphic, tabular report, alarm thresholds and signs of exceeding thresholds
- Tabular recording report in CSV format
- Centesimal resolution 0,01 °C
- Available with internal or external sensor
- Multi-screen display
- Manual recording with START button
- Manual STOP button can be activated via software
- Mark readings
- Current value, minimum, maximum, average e MKT (mean kinetic temperature)
- Protection class IP65
- Certifiable Accredia



mini T (internal sensor) Code: 70100003



mini T1 (external sensor) Code: 70100103



The PDF report includes an abstract of the configuration and specifications, measurement statistics (maximum, minimum, average, mean kinetic temperature), temperature distribution histogram, transport conditions and duration of any alarms. It shows date and time, the recorded temperature and the number of readings in a table, also in a CSV file.

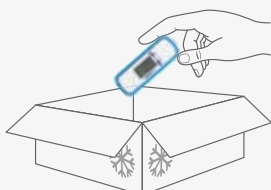
Technical Specifications

Temperature range	-40 °C ... +80 °C
LCD operative range	-10 °C ... +80 °C
Accuracy	±0.5°C (-40 ÷ -10) °C ±0.3°C (-10 ÷ +80) °C
Resolution	0.01 °C
Memory	48000 readings
Sampling rate	from 5 seconds to 24 hours
Display LCD	Multi-screen
Marked readings	Yes, with START button (2 seconds)
Temperature sensors	Internal or external dxL = 4x80mm, cable L = 1m
Sensor response time	Internal and external: better than 7 min (T90) in moving air
Security	Password protection (by software)
Power supply	Lithium button battery 3V
IP protection	IP65
Housing	Polycarbonate
Battery life	1 – 2 years (for normal usage)
Buttons	Start e Stop
Start options	Manual start with or without delay Auto Start on date and time Auto Start on set temperature with or without delay
Stop options	Auto Stop after a set period Auto Stop on date and time Manual Stop
Warranty	2 years (no battery)
Dimensions / Weight	103 x 35 x 11 mm / 31 g with battery (43 g with rubber shell)
Certificates	CE, RoHS
Code 70100003	Mini T (internal sensor) with rubber shell
Code 70100103	Mini T1 (external sensor) with rubber shell

Semplice utilizzo



Start recording



Put it in the box



Download data

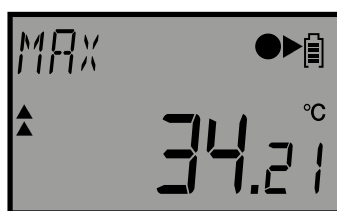


Display data in PDF

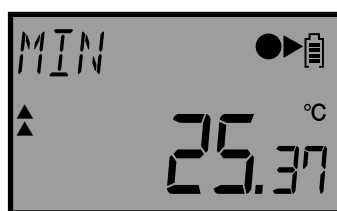
display LCD



Standard screen



Max temperature



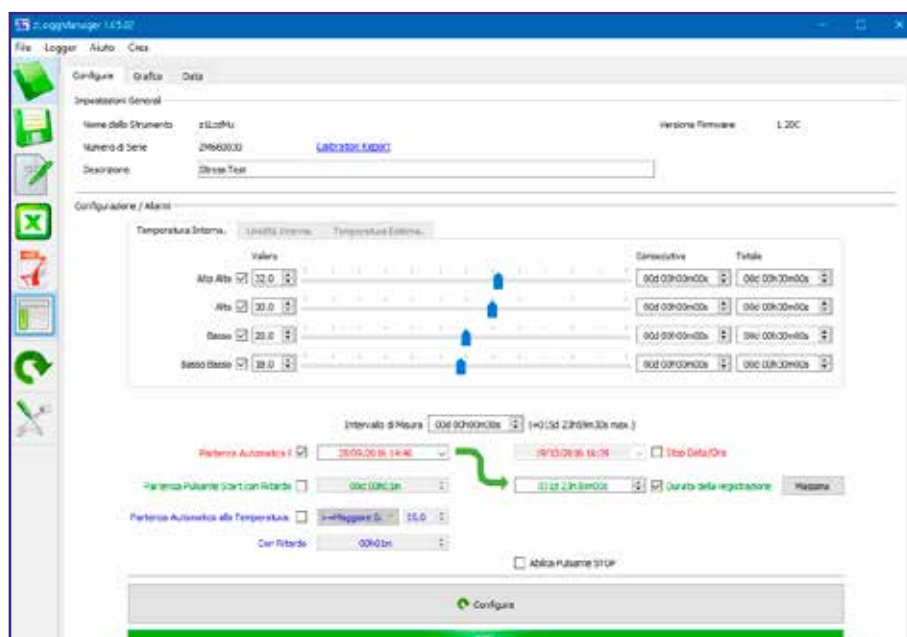
Min temperature



Low alarm duration

On the LCD display, you can see the last recorded value and the alarm sign when the logger goes over the set thresholds.

When the data logger runs, push START and STOP button for 1 seconds to scroll the menu and see "max value", "min value", "average", "MKT" and out of range time. Keep on scrolling, you can see the number of measurements for the current journey, date and time, real-time battery voltage, data logger serial number, set sampling rate and start and stop configurations. During the recording, press and hold the START button for two seconds. The "MARK" wording appears on the LCD. You can mark up to 8 events. These values are highlighted with a small square on the graph. Pressing for 5 seconds the STOP button you can also stop the current recording (this function can be enabled by the end user by the software).



Data logger set-up

mini TH

Temperature - Humidity



The XS mini TH data logger is a multi-use device for temperature and humidity measurements. It is ideal for collecting, handling and storage of food and pharmaceuticals. It has a multi-screen display: (date and time, sampling rate, start and stop recording configurations, min value, max value, average and mean kinetic temperature). All just clicking over a button. The logger works like an USB pen drive and auto generates the report files. No software required to download data. It has got four alarm thresholds programmable by the software.

When it is connected to the PC USB port, it auto-generates a PDF graph report.

Technical Specifications

Temperature range	-40 °C ... +80 °C 0 ... +100% RH
LCD operative range	-10 °C ... +80 °C
Accuracy	±0.5°C (-40 ÷ -10) °C ±0.3°C (-10 ÷ +80) °C ±3% RH
Resolution	0.01°C 0.01 % RH
Memory	48000 readings
Sampling rate	from 5 sec. to 24 hours
Display LCD	Multi-screen
Marked readings	Yes, with START button (2 seconds)
Sensor response time	Internal sensor: better than 7 min (T90) in moving air
Security	Password protection (by software)
Power supply	Lithium button battery 3V
IP protection	IP30
Housing	Polycarbonate
Battery life	1 – 2 years (for normal usage)
Buttons	Start e Stop
Start options	Manual start with or without delay Auto Start on date and time Auto Start on set temperature with or without delay
Stop options	Auto Stop after a set period Auto Stop on date and time Manual Stop
Warranty	2 years (no battery)
Dimensions / Weight	103 x 35 x 11 mm / 31 g (43 g with rubber shell)
Certificates	CE, RoHS
Code 70100203	mini TH with rubber shell

mini 1 way

Temperature



Mini pre-programmed single trip data logger for cold transport (+4°C), or with customized thresholds. Sampling rate set to 5 minutes (it can be changed for customizable ones). 45-days autonomy. Direct connection to the PC. Automatic generation of a PDF report file. The mini 1 way data logger is provided within a sealed sachet that guarantees watertight. It has two buttons (START e STOP) and five LEDs (1 green working LED and 4 alarm LEDs). It is flat with a USB direct connection to the PC.

Technical Specifications

Temperature range	-40 °C ... +80 °C
Accuracy	±0.5°C (-40 ÷ -10) °C ±0.3°C (-10 ÷ +80) °C
Resolution	0,01 °C
Memory	13000 readings
Sampling rate	from 1 sec. to 24 hours
Alarms	4, total and/or consecutive
Marked readings	Yes, with START button (2 seconds)
Sensor response time	better than 7 min (T90) in moving air
Display	5 colored LEDs Red, Green, Blue
Buttons	Start e Stop
Security	Password protection (by software)
Power supply	Lithium button battery 3V not replaceable
Battery life	1 – 2 years (for normal usage)
IP protection	IP65
PC connection	USB for data download
Start options	Manual start with or without delay Auto Start on date and time Auto Start on set temperature with or without delay
Stop options	Auto Stop after a set period Auto Stop on date and time Manual Stop
Certificates	CE, RoHS
Dimensions / Weight	78 x 48 x 9 mm (16g)
Warranty	1 journey
Code 70101003	mini 1 way with custom thresholds, (10 pieces package)
Code 70101013	mini 1 way with thresholds for + 4°C (10 pieces package)*

* Alarm thresholds: LL= 0°C, L= 2°C, H= 8°C, HH= 10°C

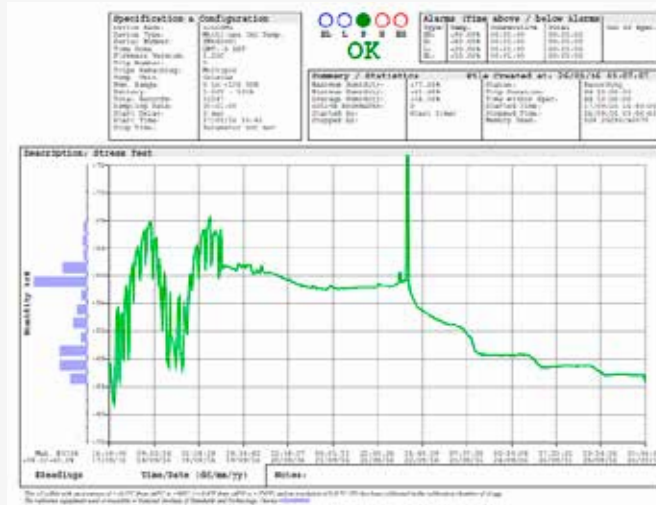
Start, Stop buttons and LEDs

- **Start:** Press and hold the green button for 10"
- **Stop:** Press and hold the red button for 10"
- **Start + Stop** at the same time: battery level **Green LED** = High level; **Red LED** = Medium level; **LED Blu** = Low level
- **Logger ready:** The **Green LED** blinks every 5"
- **Logger in recording:** **LEDs** blink two times every 4"

Download data XS mini

#	Trascorso	Periodo	I. Interna °C
Dati			
1	000 00:00:00	31/05/2017 12:26:05	27.82
2	000 00:00:05	31/05/2017 12:26:10	27.88
3	000 00:00:10	31/05/2017 12:26:15	27.93
4	000 00:00:15	31/05/2017 12:26:20	27.98
5	000 00:00:20	31/05/2017 12:26:25	28.02
6	000 00:00:25	31/05/2017 12:26:30	28.08
7	000 00:00:30	31/05/2017 12:26:35	28.14
8	000 00:00:35	31/05/2017 12:26:40	28.18
9	000 00:00:40	31/05/2017 12:26:45	28.23
10	000 00:00:45	31/05/2017 12:26:50	28.27
11	000 00:00:50	31/05/2017 12:26:55	28.31
12	000 00:00:55	31/05/2017 12:27:00	28.36
13	000 00:01:00	31/05/2017 12:27:05	28.39
14	000 00:01:05	31/05/2017 12:27:10	28.42
15	000 00:01:10	31/05/2017 12:27:15	28.46
16	000 00:01:15	31/05/2017 12:27:20	28.66
17	000 00:01:20	31/05/2017 12:27:25	28.69
18	000 00:01:25	31/05/2017 12:27:30	28.73
19	000 00:01:30	31/05/2017 12:27:35	28.77
20	000 00:01:35	31/05/2017 12:27:40	28.81
21	000 00:01:40	31/05/2017 12:27:45	28.84

Download data in PDF



Record graph with statistics report and temperature histogram

DISTRIBUTED BY

GUARANTEED BY

GIORGIO BORMAC s.r.l.

